

## Wendia POB Enterprise Manager

The Enterprise Manager is the main administrative console for POB. It provides you with a graphical “birds-eye” view of all POB components. It is a useful tool for optimizing and customizing the POB solution – thereby allowing you to adjust POB to your specific business and working processes. The Enterprise Manager is a graphical user interface implementation of configuration files that manage a graphical design of controls, tabs and properties of every window used in the POB application.



POB Enterprise Manager provides ordinary users with a wealth of customization options, allowing them to configure POB to match their individual requirements within the limitations set by the POB administrators. Also, the administrators make use of the Enterprise Manager for managing users and user groups, handling security, etc.

### Benefits to Your Organization

The Enterprise Manager provides ordinary users with an effective tool to customize their graphical user interface, thereby facilitating their daily work to benefit the organization. The Enterprise Manager enables POB administrators to define security profiles for users and user groups in a quicker and safer way. This minimizes the risk of security breaches and improves the workflow throughout your organization.

### Benefits to the User

The Enterprise Manager makes it easier to modify your POB solution and provides immediate visual feedback on the changes you make. The new editors enable you to achieve the results you require without using programming or configuration files. Furthermore, the Enterprise Manager assists POB administrators in supervising and managing POB users' activities.

### Enterprise Manager for Competitive Advantage

To remain competitive and to stay ahead of your competitors you need to optimize the daily

workflow in your organization. An essential contribution to this process is the Enterprise Manager that assists POB administrators in carrying out their tasks and enables ordinary users to customize their graphical user interface.

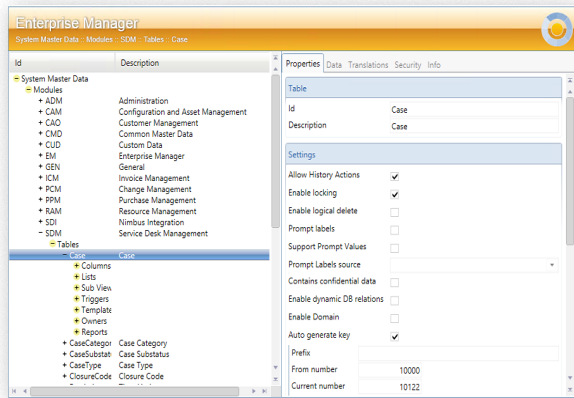
### Storing Customizations

Naturally, all customizations made in the Enterprise Manager are stored in the POB database, and therefore will not be affected by upgrades to new POB releases.

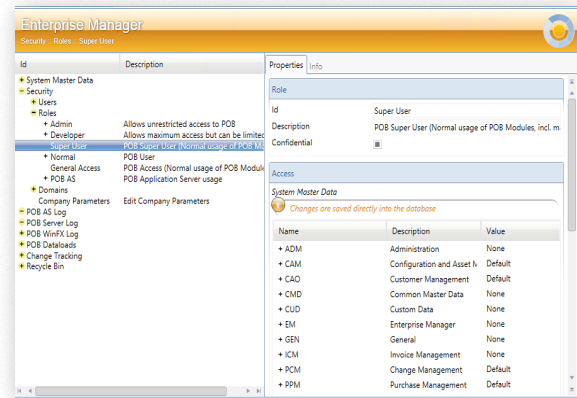
### Configuration of GUI

The POB Enterprise Manager provides ordinary users (non-administrators) with many customization options. You can change a lot of POB settings, and therefore configure them to match your requirements. And, of course, the POB Enterprise Manager will assist you in restoring the original settings, as well. You can:

- Change some properties in the selected window
- Customize properties in the selected control
- Specify the search and lookup views
- Set your own default values
- Define the custom tab order



▲ The POB Enterprise Manager window



▲ Setting up Security Profiles in the Enterprise Manager

- Change the existing control's search operator

### Assistance to POB Administrators

The Enterprise Manager will assist administrators in carrying out the following activities:

- **Operations with POB windows.** The Enterprise Manager will help you adjust the POB windows to contain exactly the information your business needs, to set security options for the windows etc.
- **Operations with POB controls.** You may need to modify some controls within specific windows or even create new controls. The Enterprise Manager will simplify these tasks.
- **Operations with tables and table columns.** Operations with database elements (tables and columns) are a major part of the Enterprise Manager capabilities.
- **Importing and exporting of custom configuration.** Administrators only need to make configurations in one environment, as these configurations then can be taken from development to test, and from test to production.
- **Managing users and user groups.** These are the direct responsibilities of each administrator. The Enterprise Manager makes these tasks easy and clear.
- **Security.** Security is an essential part of any complicated corporate system like POB. Configuring security settings is, therefore, one of the most important and common tasks of the administrator. The Enterprise Manager

offers a fast and convenient way of viewing the system's security settings and customizing them when required.

- **Managing data load.** Data load is a powerful and flexible engine in the POB system that allows you to automate and schedule the process of loading data from external files into the database.
- **Actions and conditions.** Define conditions in the CMDB that will automatically execute the related actions when the condition occurs (messages, CMDB maintenance, audit log, validations, execute programs, define time limits etc.)
- **Miscellaneous.** Other options that make the Enterprise Manager such a flexible tool include operations with enumerators, the POB menu, language support, including import/export of translations, etc.



*Excellence in Service Management*

Netherlands  
 Plesmanstraat 2  
 3833 LA Leusden  
 T +31 33 4321700  
[www.mexontechnology.nl](http://www.mexontechnology.nl)

Belgium  
 Leuvensesteenweg 392B  
 1932 Sint-Stevens-Woluwe  
 T +32 2 725 16 44  
[www.mexontechnology.be](http://www.mexontechnology.be)

France  
 Immeuble Technologies  
 84/88 bd de la Mission Marchand  
 92411 Courbevoie Cedex  
 T +33 1 49 04 71 71  
[www.mexontechnology.fr](http://www.mexontechnology.fr)

Contact us at:  
[sales@mexontechnology.com](mailto:sales@mexontechnology.com)

Visit our website at:  
[www.mexontechnology.com](http://www.mexontechnology.com)

