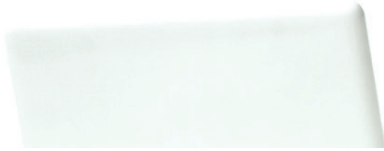


Wendia

POB Purchase & Inventory Management



POB Purchase & Inventory Management automates and monitors your procurement process thereby optimizing your total purchase and inventory workflow. The solution supports the entire purchase workflow from product request, through purchasing activities and receiving the goods, as well as the entire inventory workflow from spare part management to warehouse configuring.

POB Purchase & Inventory Management provides personnel with a powerful tool for posting inventory accurately and for managing the best possible warehouse configuration.

Benefits to Your Organization

POB Purchase & Inventory Management integrates with all the other POB modules, making information transparent throughout the organization. It removes all the guesswork by automatically calculating your requirements, and coordinating purchases. IT managers can improve productivity in the purchasing process and secure an efficient installation process.

Benefits to the User

POB Purchase & Inventory Management provides personnel with a powerful tool for posting inventory accurately and managing the best possible warehouse configuration. POB Purchase & Inventory Management gives users access to all vital data, including product delivery and matching orders for approval. Purchase & inventory managers can then monitor activities in an easy and efficient way.

Optimized Workflow for Competitive Advantage

In order to stay ahead of your competitors, your organization needs to control its purchase and inventory workflow. With POB Purchase & Inventory Management, you will be able

to implement and manage a cutting-edge distribution system based on quick response and continuous replenishment concepts according to standards.

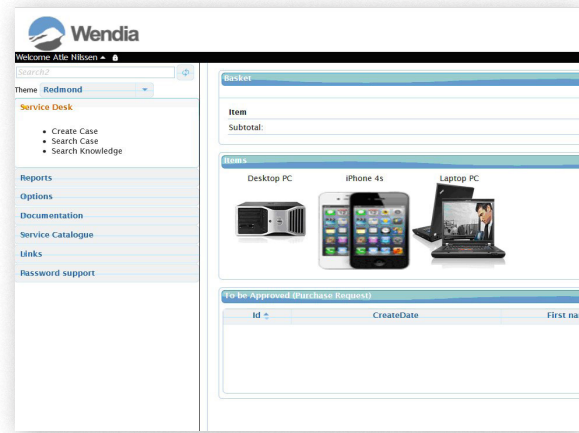
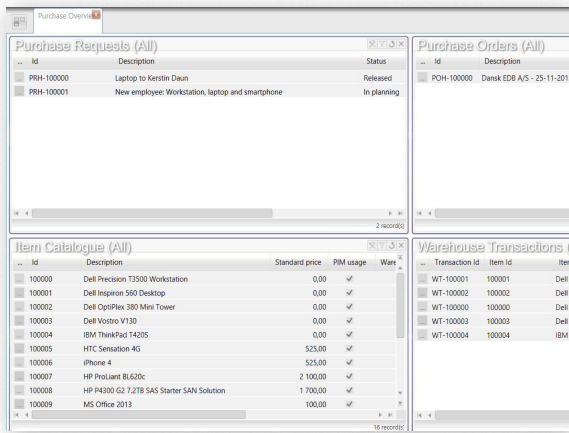
Procurement Processes

With integration to other POB modules, POB Purchase & Inventory Management ensures an automatic generation of configuration items (CI's) based on the purchase request and an automatic generation of work orders. After being configured in POB, the CI is automatically connected to the relevant service level agreement and to the operational level agreement for future invoicing, based on the requested services.

The flexibility of the solution allows customization and configuration to match your company's unique structures.

Purchase Request Configuration

Purchase request configuration initiates and configures the purchase requests. To simplify the process, you can use predefined configurations and standards.



▲ The Purchase Overview window showing relevant information in one screen

▲ Web shop – a part of the Self Service Portal

Purchase Request

POB allows you to:

- Create, maintain, and route purchase requests for approval
- Validate and add supplementary products
- Use a web based application for requests and approvals

Purchase Order Control

Purchase order control creates the purchase order, and manages the purchase order process from planning phase to delivery.

Purchase Order

POB Purchase Order enables you to evaluate proposals, issue purchase orders, and monitor deliveries. You can:

- Evaluate preferred suppliers
- Compare discounts offered
- Maintain, update and route purchase orders
- Follow up on purchase order status
- Monitor deliveries

Warehouse Processes

Warehouse management makes it possible to maintain complete control of stocks and suppliers. This includes automated orders when stock is running low.

- Items in the item catalogue can be defined as either a warehouse item or an item that must be ordered from the supplier whenever it is requested for.
- Automatic generation of warehouse transactions keeps full control of the item stock, including the pending transactions for reservations and “on order”.
- Defined minimum quantities and order

quantities are used for automatic alarms when an Item is low on stock, including automatic generation of purchase orders.

- The warehouse transaction log will document the complete stock value history, including manual adjustments according to warehouse control. Based on this log, material requirements planning (MRP) reports can easily be defined.

Monitoring and Reporting

POB's monitor function allows you to monitor any critical process, target, performance or service level, etc. The built-in reporting options enable you to create reports on any Key Performance Indicator, ensuring that all your business goals are achieved. With statistics and reports available online, you can continuously monitor customer satisfaction, service quality and profitability.



Excellence in Service Management

Netherlands
Plesmanstraat 2
3833 LA Leusden
T +31 33 4321700
www.mexontechnology.nl

Belgium
Leuvensesteenweg 392B
1932 Sint-Stevens-Woluwe
T +32 2 725 16 44
www.mexontechnology.be

France
Immeuble Technologies
84/88 bd de la Mission Marchand
92411 Courbevoie Cedex
T +33 1 49 04 71 71
www.mexontechnology.fr

Contact us at:
sales@mexontechnology.com

Visit our website at:
www.mexontechnology.com

